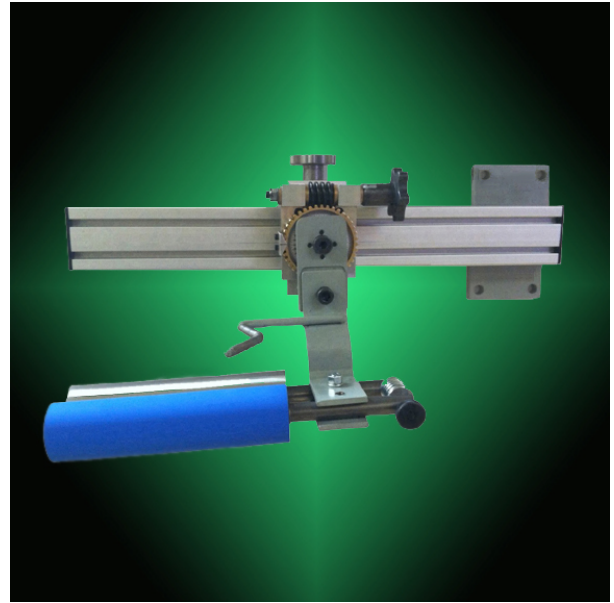
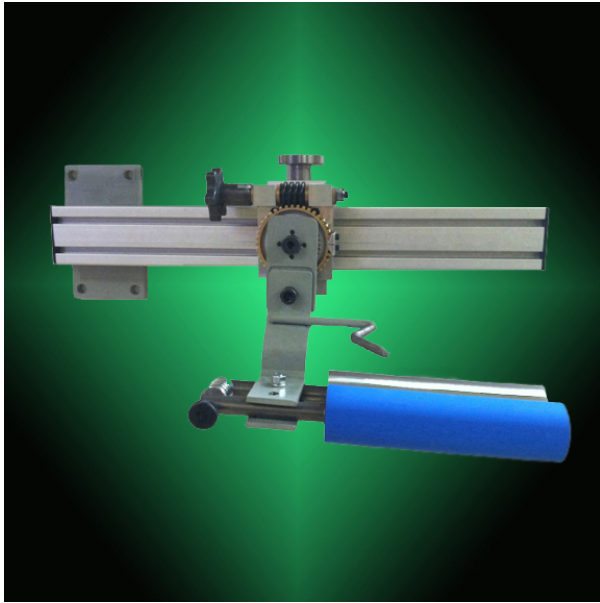




# Mounting Bracket with Angular Adjustment for Adjusta-Pull® Nip Type Anti-Wrinkle System

Converter Accessory Corporation  
www.converteraccessory.com

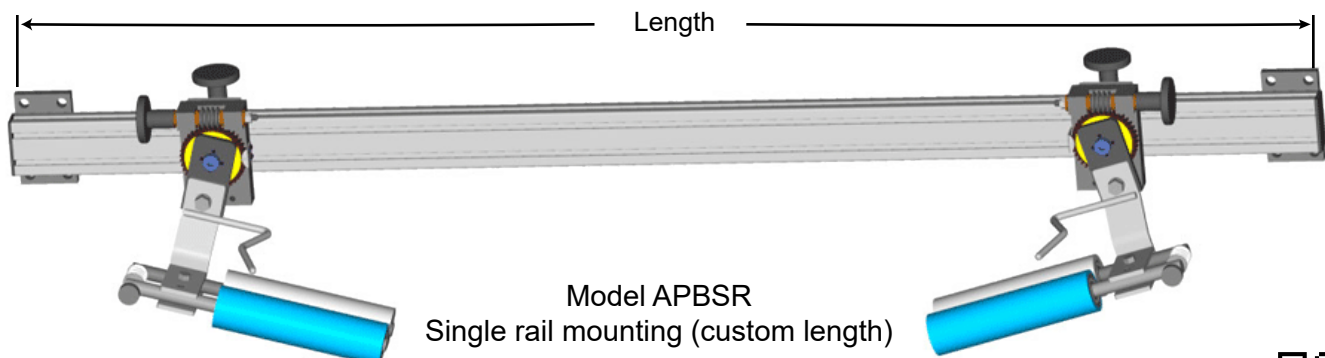


For more information, visit:

[www.converteraccessory.com/products/wrinkle/apbracket.php](http://www.converteraccessory.com/products/wrinkle/apbracket.php)

CAC's Adjusta-Pull mounting bracket, left and right side, each includes:

- Cantilevered mount, extruded aluminum slide rail
- Slide mount for easy web width adjustment
- Manual angular adjustment with angle indicator
- Purchase with your next order for Adjusta-Pull nip type anti wrinkle device or purchase just the mounting brackets and conveniently add your existing Adjusta-Pull assemblies
- Easy to mount / re-position
- Heavy duty construction



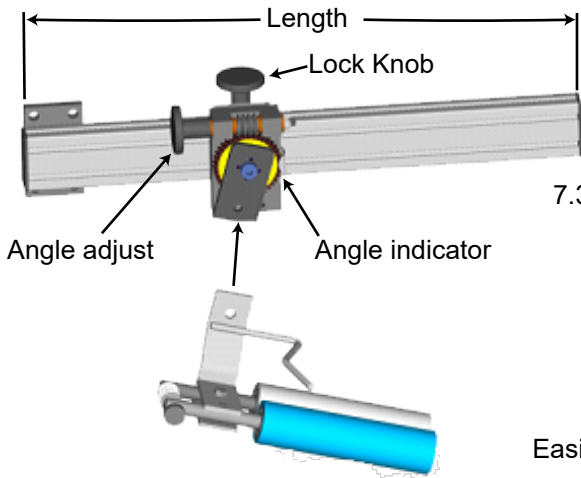
Brackets shown with Adjusta-Pull anti-wrinkle system mounted. Adjusta-Pull anti-wrinkle system sold separately.



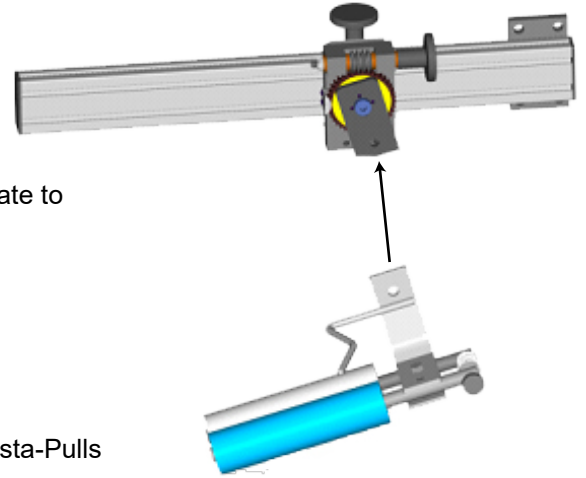


# Mounting Bracket with Angular Adjustment for Adjusta-Pull® Nip Type Anti-Wrinkle System

Converter Accessory Corporation  
www.converteraccessory.com



7.3" from back of mounting plate to web pass-line thru nips

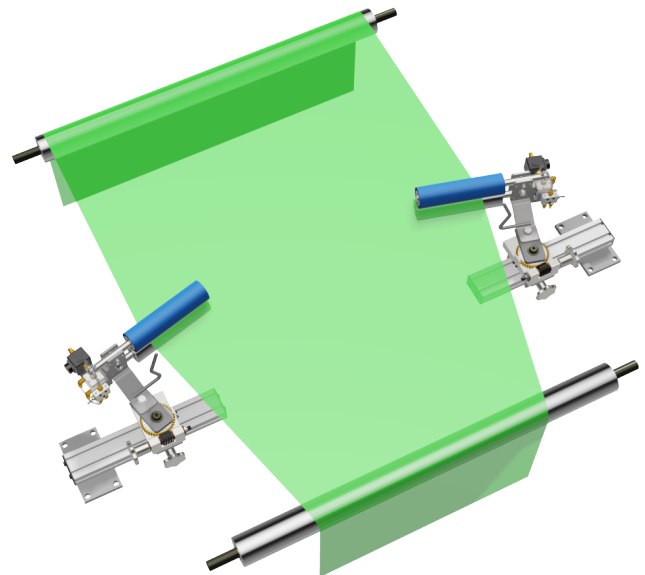


Easily mount your existing Adjusta-Pulls

Part Number	Model Number	Length	Adjustment	Mounting	Appr Weight (pounds)
50959-26	APB12	16"	12"	(4) .562" Clearance holes with 3" x 6" mounting pattern (each side)	12
50959-28	APB18	22"	18"	(4) .562" Clearance holes with 3" x 6" mounting pattern (each side)	13.2
50959-30	APB24	28"	24"	(4) .562" Clearance holes with 3" x 6" mounting pattern (each side)	14.5
50959-31	APB30	34"	30"	(4) .562" Clearance holes with 3" x 6" mounting pattern (each side)	15.5
50959-33	APBSR	Web width + 24.625	Web width as required	(4) .562" Clearance holes with 3" x 6" mounting pattern (each side)	17.5+ .2 per inch of rail

## Adjusta-Pull web spreading concept

When each of the nip assemblies are angled away from each other, each of the web edges will try to maintain a 90 degree entry angle to each nip assembly. This action effectively and aggressively pulls each web edge to spread you we and remove wrinkles. Increasing the angular displacement of each nip assembly increases the web spreading action.



**Converter Accessory Corporation**

201 Alpha Road, PO Box 188, Wind Gap, PA 18091-0188

www.converteraccessory.com  
sales@converteraccessory.com

Phone: 800-433-2413  
610-863-6008

Fax: 800-709-1007  
610-863-7818